

# The NEPTUNE

For the big jobs, the Neptune is the way to go. Ranging from 3.24m<sup>2</sup> to 60m<sup>2</sup> it uses the same principles as its cabinet counterparts. It allows multiple users, gives the same amazing range of surface finishes and doesn't require an expensive dust filtration system.

Dana-Ridge can supply the sump and parts or manage the design and build from start to finish.



Dana-Ridge supplies a wide range of blast cabinets with manual, semi-automated and automated options in various sizes.

Sump Units extend the range and flexibility of the Dana -Ridge Wetblast system. We can provide the power pack and base of the machine allowing the customer to decide the ultimate size and shape of the wetblast area.

This is especially useful where the user wishes to install walk-in booths.

## Standard Equipment

A media collection sump with its critical side slopes, the recirculation pump and tee piece, the media and compressed air circuits, electrical controls and process gun/s.

A rear wall or backplate supports this equipment and provides the connections from external to internal fittings. The backplate also serves as the basis for further fabrications

## Additional Equipment

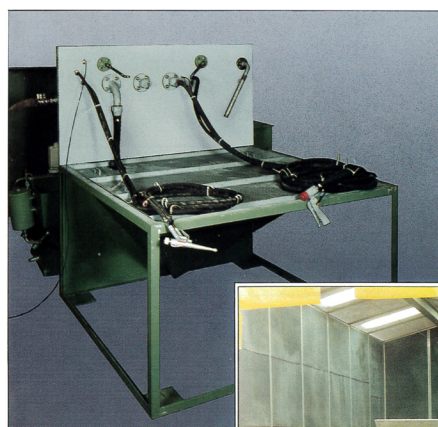
-Wash down facility for the extended slopes (see diagram overleaf)

-Grids and supports for heavy workpieces

-Multiple blast guns with deadman triggers.

- Lightweight protective clothing including clean air breathing facilities for safety and comfort

-Fully customisable setup depending on customer requirements

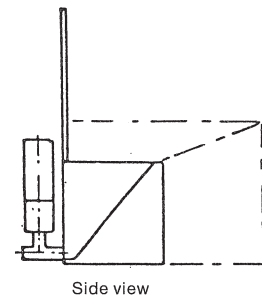
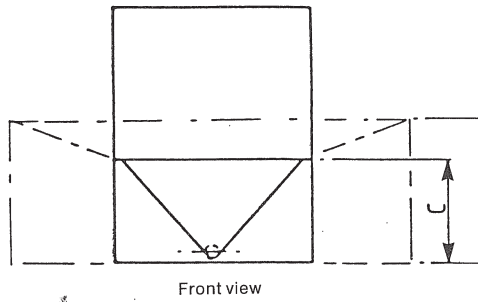
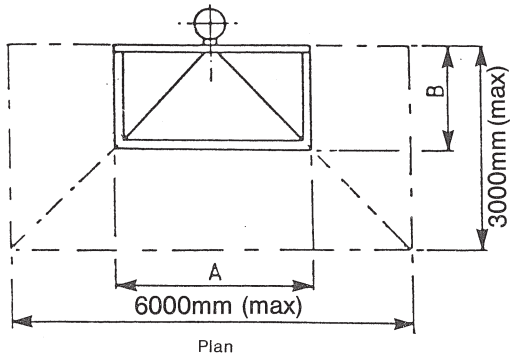


Further information can be obtained by talking to us here at Dana-Ridge. See overleaf for contact details.

**Dana-Ridge**  
Ph. 1800 806 316

## Sump Units

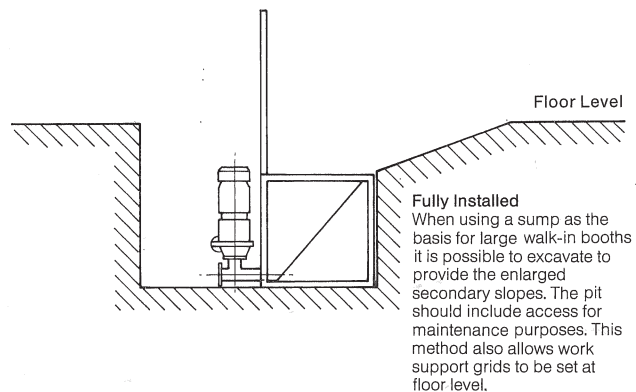
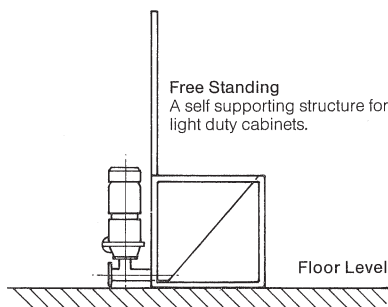
## Dimensions (mm)



Nominal Size	Length (A)	Width (B)	Height (C)
1220 square	1220	1220	850
1830 square	1830	1830	1100
1000 x 2000	1000	2000	1000

When larger units are required it is possible to set the sump unit into a suitable excavation and to provide work support grids at floor level. The range of additional equipment includes increased sump sizes by extended secondary slopes up to a maximum of 3000 x 6000mm.

## Installation



## Services

Electricity: 415 Volt  
3Phase

Water: Mains Supply 1/2" BSP Connection

Compressed Air: 5.6kg/cm<sup>2</sup> (80 p.s.i.) Maximum pressure.  
1.7cu.m/min (60cfm) maximum volume (**per gun**)

Requirements for ducting, extration, drainage and other site requirements will vary with the design of the upper structure. Abrasive Developments would be pleased to discuss and advise on such matters.

Noise levels will depend entirely on the type and design of the upper structure and on the degree of sound insulation which can be included. Attention is drawn to the Health and Safety at Work Act and to general workshop practice for noise emission.

ADAE PTY LTD TRADING AS  
**Dana-Ridge**

A.B.N. 93 109 483 007

### HEAD OFFICE

Unit 12 67 Bancroft Road  
Pinkenba QLD 4008 Australia

PO Box 2834  
Ascot QLD 4007 Australia

Phone: +61 (0)7 3860 4913  
**Toll Free (AUS) 1800 806 316**  
Toll Free (NZ) 0800 944 788  
Email: [wetblast@dana-ridge.com.au](mailto:wetblast@dana-ridge.com.au)  
Website: [www.dana-ridge.com.au](http://www.dana-ridge.com.au)